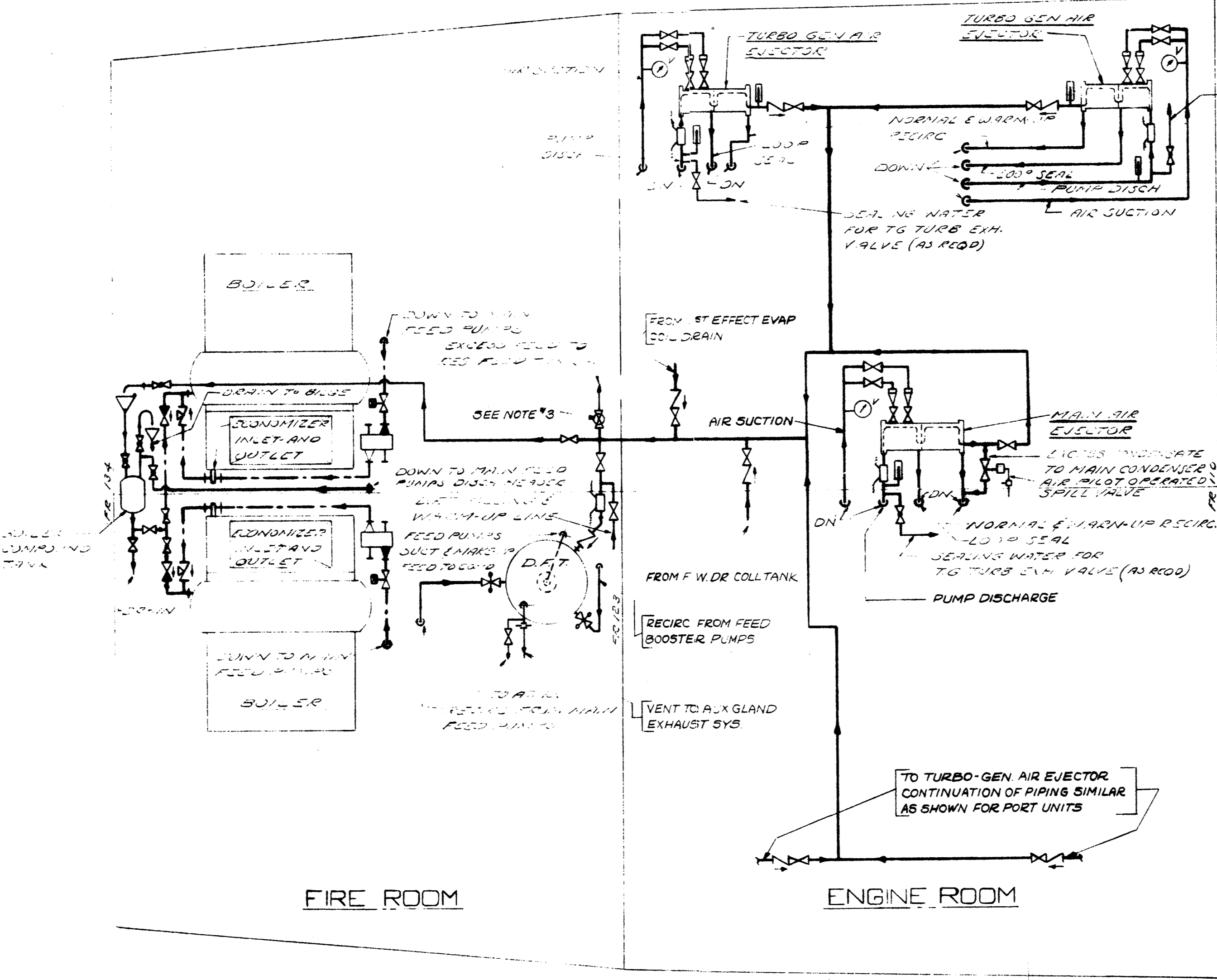
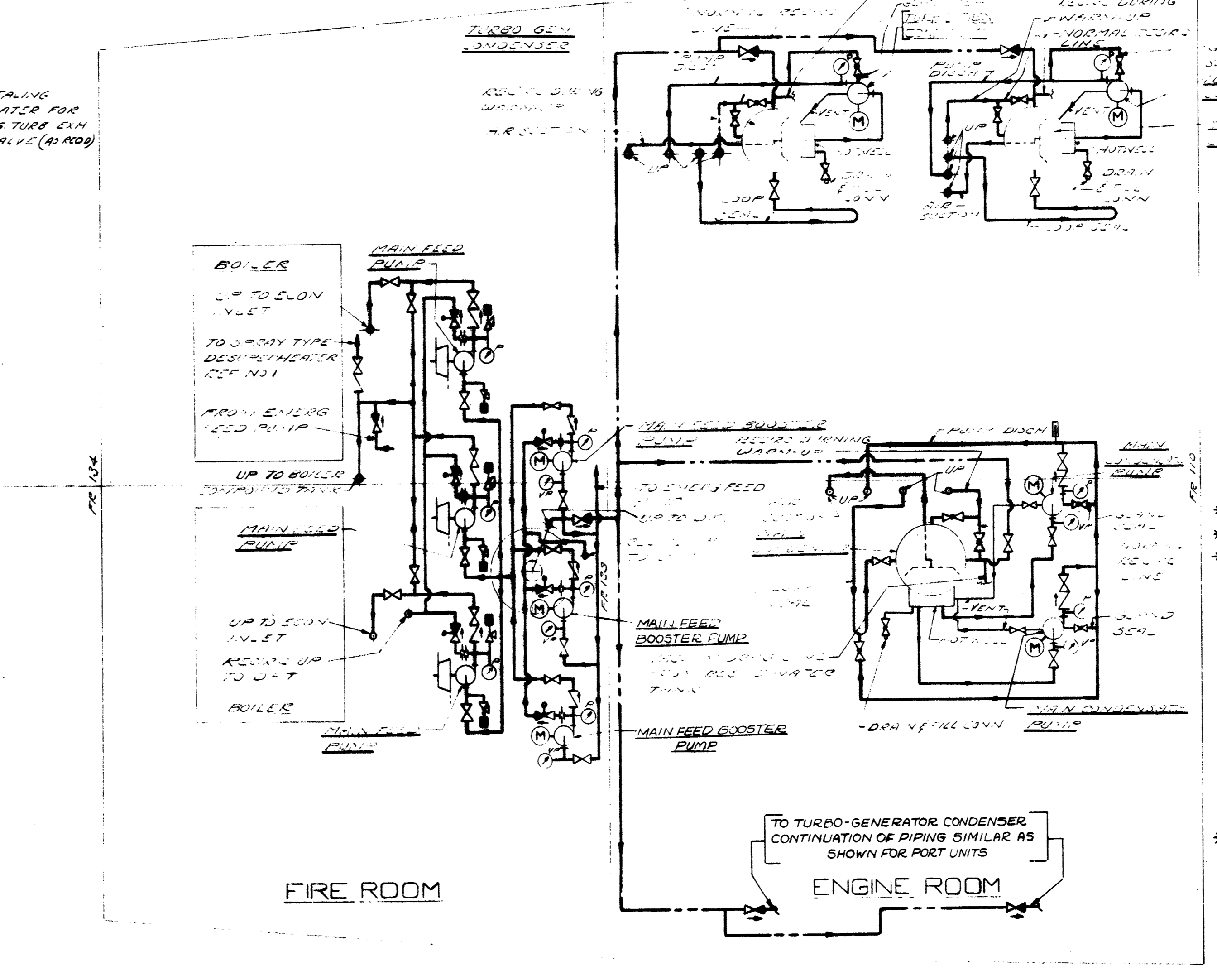


RESERVE FEED TRANSFER SYSTEM



FEED AND CONDENSATE SYSTEM
UPPER LEVEL



FEED AND CONDENSATE SYSTEM
LOWER LEVEL

SYMBOL LIST (SEE NOTES #1 & 2)

HOSE VALVE (GLOBE TYPE)
GATE VALVE
GLOBE VALVE
GLOBE STOP CHECK
GATE LOCKED OPEN
GLOBE LOCKED CLOSED
CHECK, 45°
NEEDLE
BOILER FEED REGULATOR
AIR PILOT OPERATED VALVE
ANGLE RELIEF VALVE
THERMOMETER BI-METALLIC
SALINITY CELL
MULTIPLE ORIFICE
ORIFICE
SWING SPOUT
FUNNEL WITH SWING COVER
PRESSURE GAGE
VACUUM GAGE
VACUUM PRESSURE GAGE
BOILER FEED STOP CHECK COMBINED
INTERLOCKED MANIFOLD
MANIFOLD
MANIFOLD GLOBE CHECK
CONDENSATE OR RELIEF FEED WATER PIPING
FEED OR VACUUM DRAIN PIPING
REGULATION PIPING
MOTOR
TURBINE
PUMP CENTRIFUGAL
PUMP RECIPROCATING
UP
DOWN
SWING CHECK VALVE
GATE VALVE LOCKED CLOSED

NOTES:

1. SYMBOLS MARKED WITH * IN SYMBOL LIST ARE IN ACCORDANCE WITH MIL-STD 17A OF 11 SEPTEMBER 1961.
2. SEE SECTION 3480-D-C OF DETAIL SPECIFICATIONS FOR PIPING END CONNECTIONS.
3. MAIN FEED VALVE AND EXCESS FEED VALVE SHALL BE OPERABLE FROM POSITION NEAR THE DFT AND THE DFT REMOTE LEVEL INDICATOR AT THE LOWER LEVEL.
4. RESERVE FEED TANKS SHALL HAVE LEVEL INDICATING DEVICES THAT CAN BE READ FROM THE VICINITY OF THE ASSOCIATED DEAERATING FEED TANK LEVEL INDICATOR.
5. HOSE CONNECTIONS SHALL BE SUITABLY LOCATED FOR LAYING UP BOILER.

REFERENCES

NO	TITLE	BUSHING NO
1	DIAG ARR OF STEAM EXHAUST SY. EN	4534-800-20-8867
2	DIAG OF PURE WATER SPENT COOLING SYS	4534-800-19-99716

DEPARTMENT OF THE NAVY WASHINGTON, D. C.

BUREAU OF SHIPS

SUBMARINE TENDER AS 34

DIAGRAMMATIC ARRANGEMENT OF FEED AND CONDENSATE SYSTEM

EXAMINED: [Signature]

APPROVED: [Signature] DATE: 30/1/65

MACHINERY CONTRACT GUIDANCE PLAN

AS 34 800 2018866