

**OPERATING CONDITIONS**

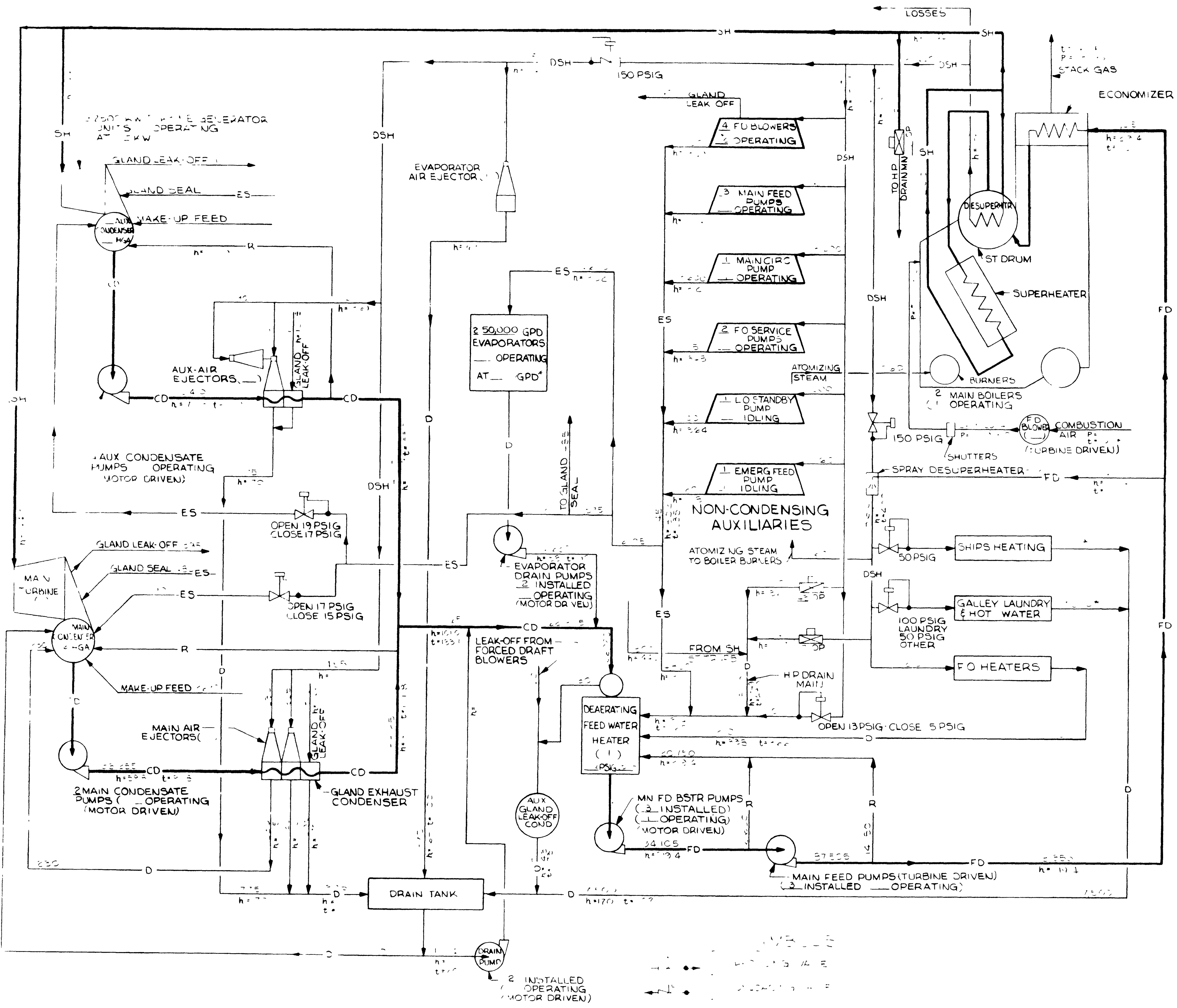
1 SHAFT HORSEPOWER	5-D
2 ESTIMATED SPEED	KNOTS
3 TRIAL DISPLACEMENT	TONS
4 STEAM PRESSURE (BOILER TRUM)	PSIG
5 STEAM PRESSURE (SUPERHEATER OUTLET)	PSIG
6 STEAM PRESSURE (DESUPERHEATER OUTLET)	PSIG
7 STEAM TEMPERATURE (SUPERHEATER OUTLET)	°F
8 STEAM TEMPERATURE (DESUPERHEATER OUTLET)	°F
9 MAIN TURBINE & TURBINE GEN THROTTLE PRESS	PSIG
10 MAIN TURBINE (DESUPERHEATER) TEMP	°F
11 AUX TURBINE (DESUPERHEATER) TEMP	°F
12 AUX TURBINE (DESUPERHEATER) PRESS	PSIG
13 MAIN TURBINE CONDENSER ABS PRESS.	NHG A
14 TURBINE GENERATOR CONDENSER ABS PRESS.	NHG A
15 AUXILIARY EXHAUST PRESSURE	PSIG
16 DEAERATING FEED TANK PRESSURE	PSIG
17 FEED WATER TEMPERATURE	°F
18 AUXILIARY ELECTRICAL LOAD	KW
19 BOILER OVERALL EFFICIENCY	%
20 BLOWER (FUEL) PRESSURE	IN H <sub>2</sub> O
21 FUEL CONSUMPTION	LB/HR
22 SPECIFIC FUEL RATE	LB/SHP-HR
23 MAIN TURBINE WATER RATE	LB/SHP-HR
24 TURBINE GENERATOR WATER RATE	LB/KW-HR
25 SEA WATER TEMPERATURE	°F
26 OUTSIDE AIR TEMPERATURE	°F
27 PROPELLER RPM	RPM
28 FUEL OIL HHV	BTU/LB

**LEGEND**

SH	SUPERHEATED
CD	CONDENSATE
FD	FEED
DSH	DESUPERHEATED
ES	AUXILIARY EXHAUST
D	DRAINS
R	RECIRCULATION

**NOTES:**

- 1 QUANTITIES SHOWN ABOVE FLOW LINE FOR ALL FLUIDS ARE IN LBS/HR
- 2 ... THUS THEY ARE ENTHALPIES IN BTU/LB
- 3 ... TEMPERATURES IN °F
- 4 ... MARKED WITH \* ARE STANDARD DESIGN CONDITIONS



AS34 800 871

HEAT BALANCE AND FLOW DIAGRAM 12 KNOTS ENDURANCE (1 BOILER)

AS34 800 871