

OPERATING CONDITIONS

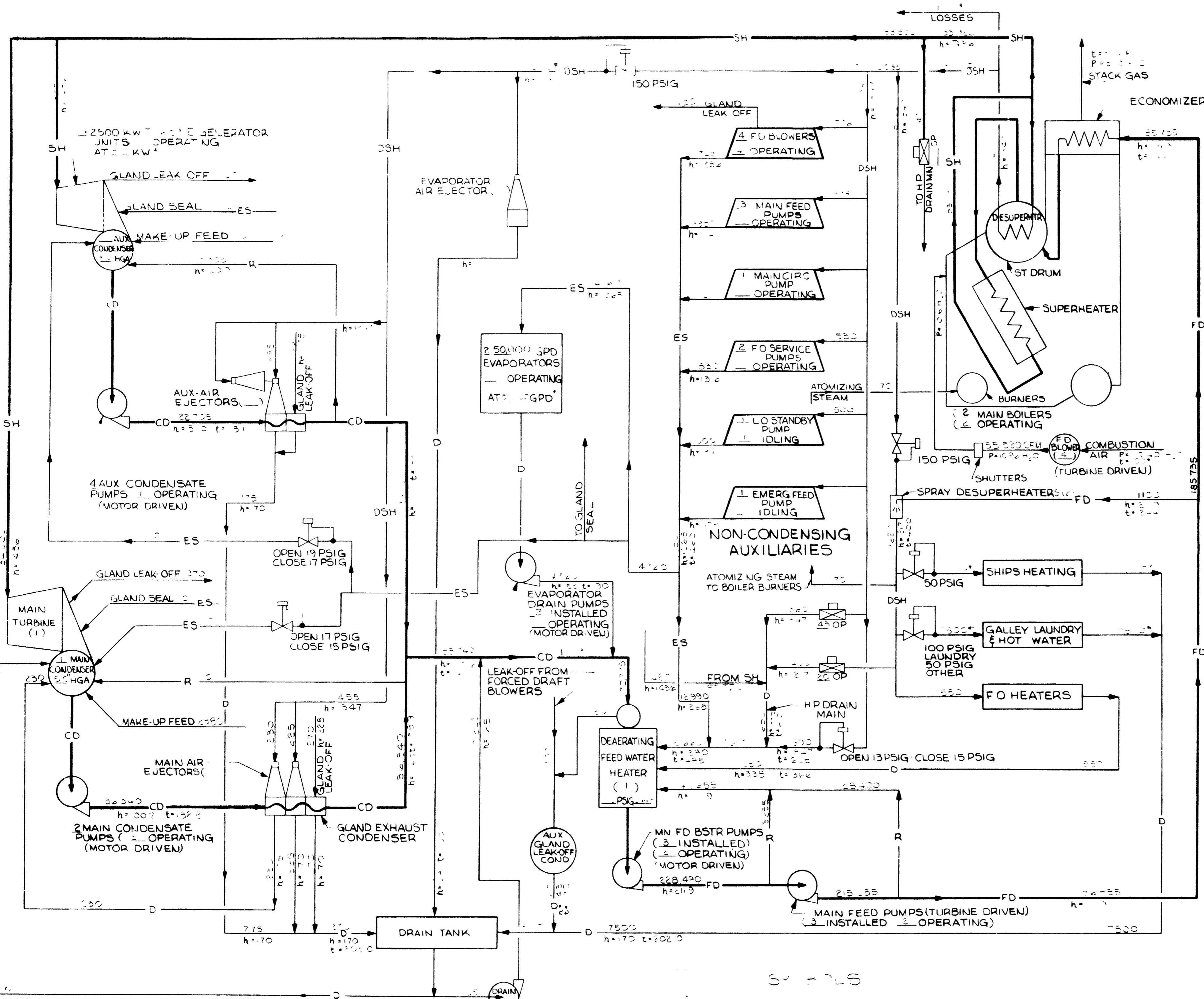
1	SHAFT HORSEPOWER	10,000	5-D*
2	ESTIMATED SPEED		KNOTS
3	TRIAL DISPLACEMENT		TONS
4	STEAM PRESSURE (BOILER DRUM)	230	PSIG
5	STEAM PRESSURE (SUPERHEATER OUTLET)	230	PSIG
6	STEAM PRESSURE (DESUPERHEATER OUTLET)	210	PSIG
7	STEAM TEMPERATURE (SUPERHEATER OUTLET)	255	°F
8	STEAM TEMPERATURE (DESUPERHEATER OUTLET)	235	°F
9	MAIN TURBINE & TURBINE GEN. THROTTLE PRESS.	370	PSIG*
10	MAIN TURBINE (DESUP) THR PRESS.	210	PSIG
11	AUX TURBINE (DESUP) THR PRESS.	235	°F
12	AUX TURBINE (DESUP) THR TEMP.	235	°F
13	MAIN TURBINE CONDENSER ABS PRESS.	2.10	IN HG A
14	TURBINE GENERATOR CONDENSER ABS PRESS.	2.10	IN HG A
15	AUXILIARY EXHAUST PRESSURE	4.0	PSIG
16	DEAERATING FEED TANK PRESSURE	4.0	PSIG
17	FEED WATER TEMPERATURE	4.3	°F
18	AUXILIARY ELECTRIC LOAD	9.5	KW*
19	BOILER OVERALL EFFICIENCY	77.4	%
20	BLOWER STATIC PRESSURE	3.6	IN H ₂ O
21	FUEL CONSUMPTION	3831	LB/HR
22	SPECIFIC FUEL RATE	2.94	LB/SHP-HR
23	MAIN TURBINE WATER RATE	7.15	LB/SHP-HR
24	TURBINE GENERATOR WATER RATE	7.15	LB/KW-HR
25	SEA WATER TEMPERATURE	70	°F*
26	OUTSIDE AIR TEMPERATURE	60	°F*
27	PROPELLER RPM	1100	RPM
28	FUEL OIL HHV	18,500	BTU/LB

LEGEND

SH	SUPER-HEATED
CD	CONDENSATE
FD	FEED
DSH	DESUPERHEATED
ES	AUXILIARY EXHAUST
D	DRAINS
R	RECIRCULATION

NOTES:

- QUANTITIES SHOWN ABOVE FLOW LINE FOR ALL FLUIDS ARE IN LB/HR
- TEMPERATURES SHOWN ABOVE FLOW LINE ARE IN °F
- TEMPERATURES SHOWN IN °F
- MARKED WITH (*) ARE STANDARD DESIGN CONDITIONS



HEAT BALANCE AND FLOW DIAGRAM FULL POWER (2 BOILERS)

APPROVED: [Signature] DATE: 1/1/63

ASB 300 872