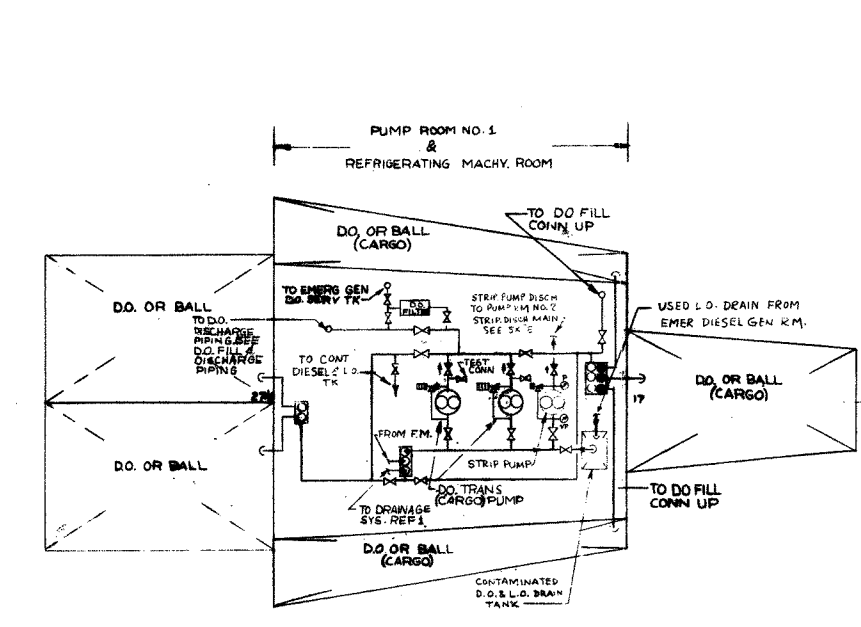
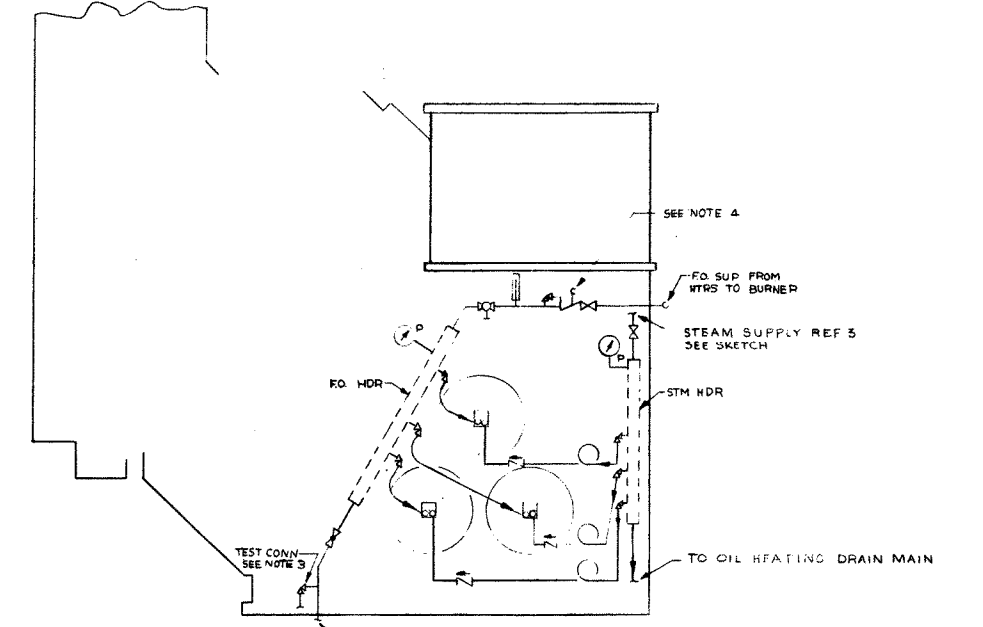


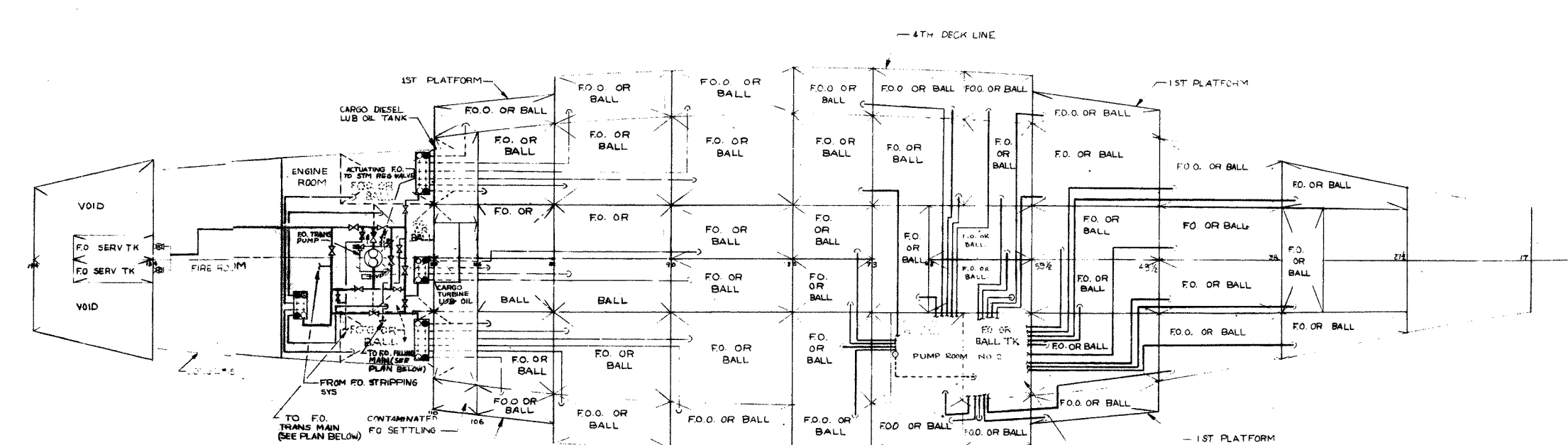
DIESEL OIL FILL AND DISCHARGE PIPING



D.O. CARGO & TRANSFER SYSTEM SKETCH D



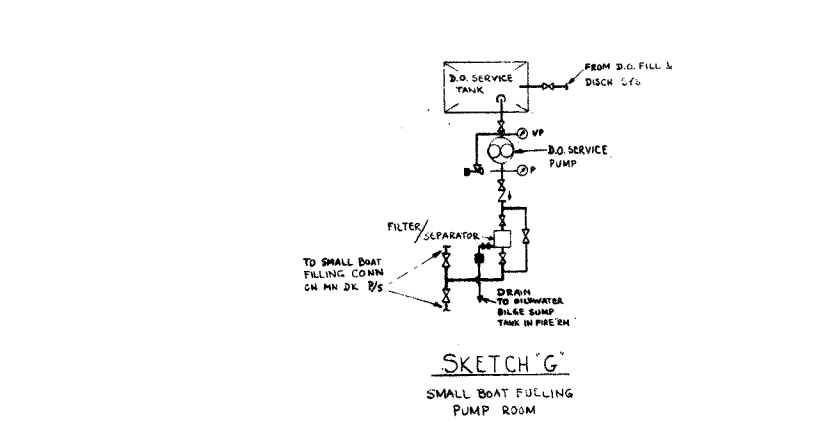
TYPICAL FUEL OIL SERVICE PIPING AT BOILER FRONT (FOR CONT. SEE FO SERVICE SYSTEM)



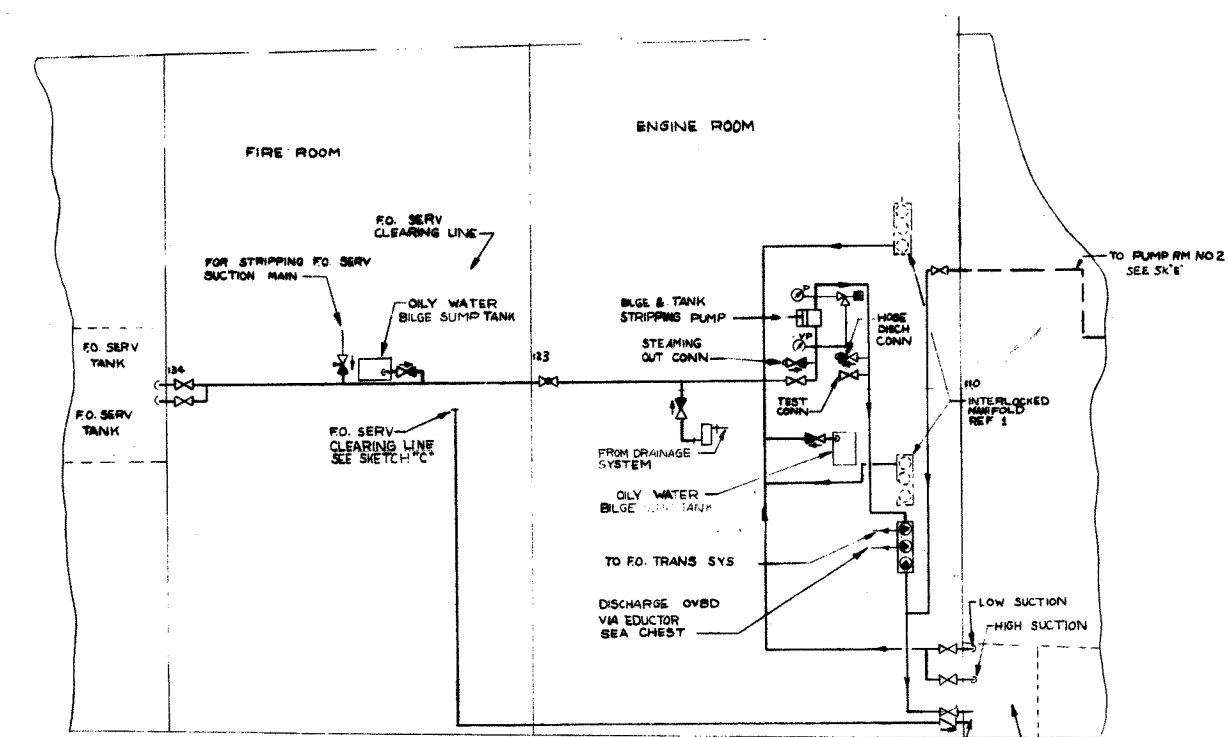
FUEL OIL TRANSFER SYSTEM

- SYMBOLS
- SEE NOTE 1 & 2
- ☐ DOUBLE VALVE MANIFOLD WITH TEST COCKS (VALVES MARKED Ⓢ ARE LOCKED CLOSED)
 - Ⓢ MICROMETER
 - Ⓢ GLOBE STOP CHECK
 - Ⓢ ANGLE RELIEF
 - Ⓢ THERMOMETER BI-METALLIC
 - Ⓢ GATE, REMOTE OPERATED
 - Ⓢ THREE WAY COCK
 - Ⓢ DUPLEX STRAINER
 - Ⓢ FLOW METER
 - Ⓢ GLOBE STOP CHECK, LOCKED CLOSED
 - Ⓢ GLOBE STOP CHECK
 - Ⓢ ANGLE VALVE
 - Ⓢ GATE, QUICK CLOSING
 - Ⓢ GLOBE STOP CHECK HOSE
 - Ⓢ PRESSURE GAGE
 - Ⓢ VACUUM PRESSURE GAGE
 - Ⓢ CHECK VALVE, SWING
 - Ⓢ GATE VALVE
 - Ⓢ GLOBE VALVE
 - Ⓢ HAND PUMP
 - Ⓢ PRESSURE REGULATING VALVE
 - Ⓢ GATE HOSE WITH CAP & CHAIN

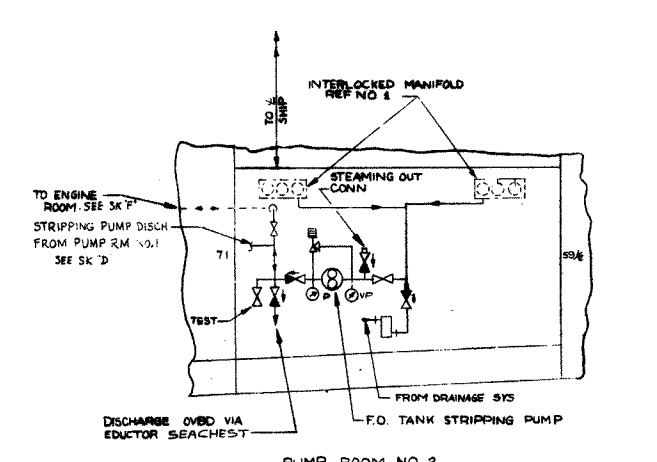
- NOTES
1. SYMBOLS MARKED * IN SYMBOL LIST ARE IN ACCORDANCE WITH MIL-STD-17A OF 11 SEPTEMBER 1951
 2. SEE SECTION 9480-C/C OF DETAIL SPECIFICATIONS FOR FITTING END CONNECTIONS.
 3. TEST COCK AND DRIP PAN DRAINS SHALL BE LED VIA FUNNEL TO THE BRIGS SUMP TANK.
 4. QUICK CLOSING VALVES SHALL BE ARRANGED FOR MANUAL QUICK CLOSING AT FIRING AISLE.
 5. THE PUMP GOVERNORS FOR THE FO SERVICE PUMPS SHALL BE EQUIPPED FOR LOCAL AND REMOTE TRIPPING TO STOP THE PUMPS IN AN EMERGENCY. THE REMOTE TRIPPING STATION SHALL BE ADJACENT TO THE FIRE ROOM ACCESS.
 6. VALVES REFERRED TO THIS NOTE SHALL BE REMOTELY OPERATED FROM DAMAGE CONTROL DECK NEAR FIRE ROOM ACCESS.



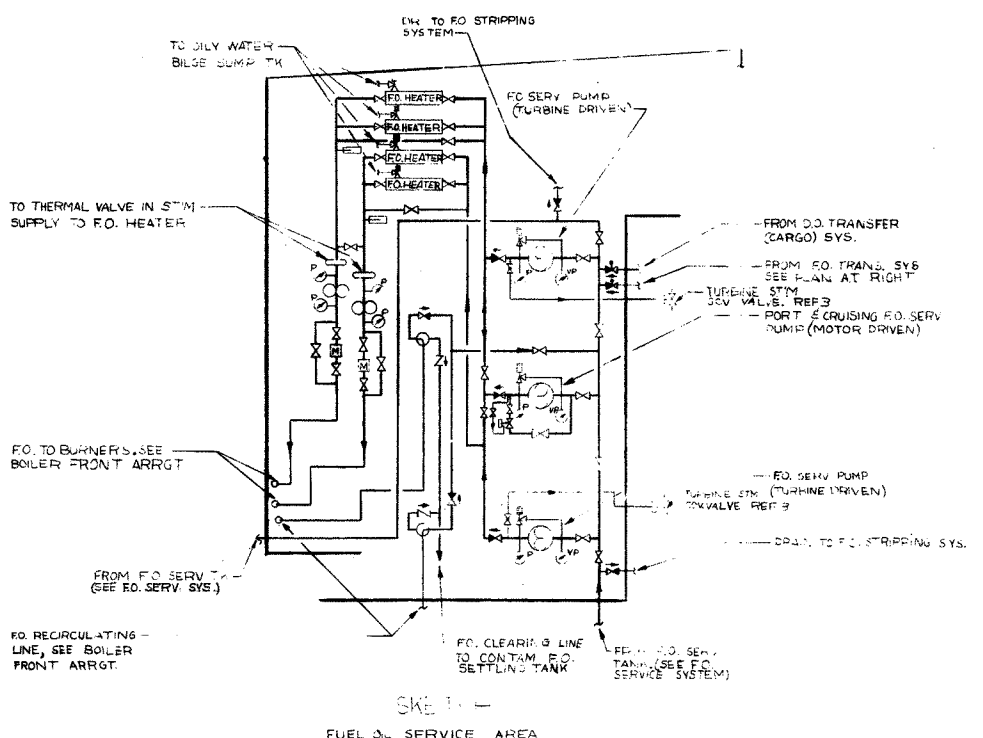
SKETCH G
SMALL BOAT FILLING PUMP ROOM



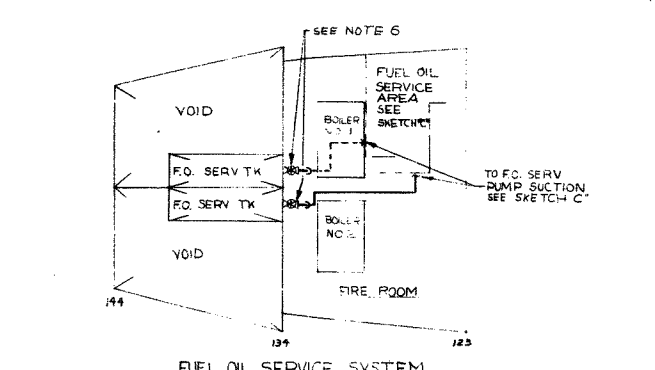
FUEL OIL TANK STRIPPING SYSTEM SKETCH F



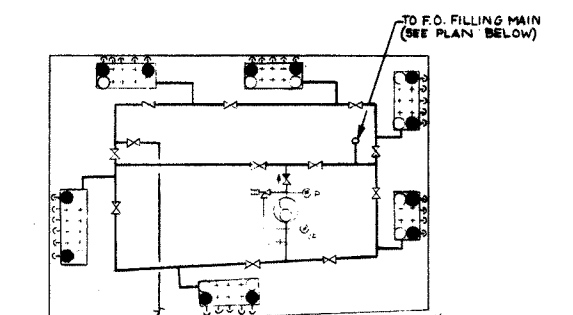
FUEL OIL TANK STRIPPING SYSTEM SKETCH E



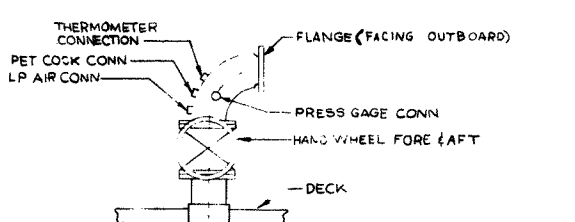
FUEL OIL SERVICE AREA SKETCH I



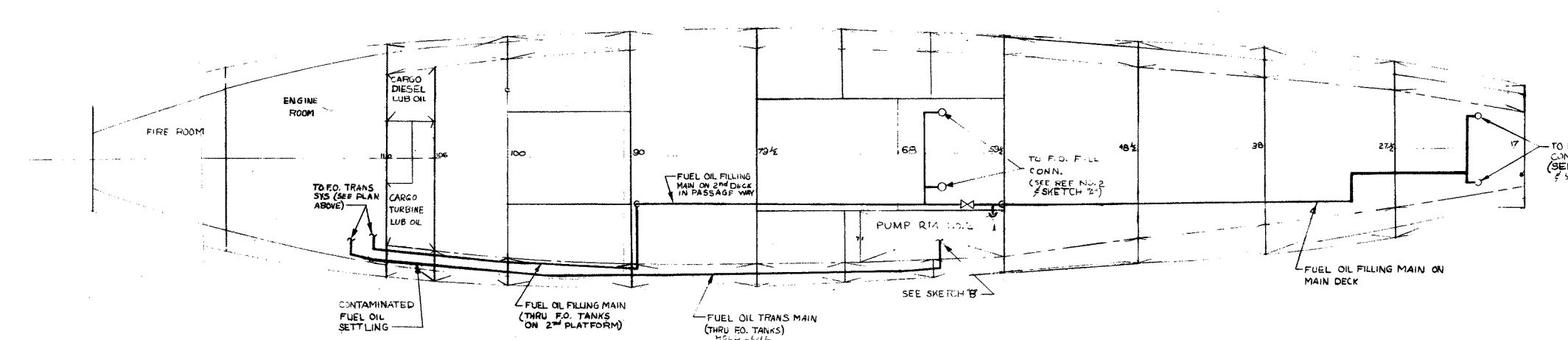
FUEL OIL SERVICE SYSTEM SKETCH B



FUEL OIL TRANS PUMP RM NO. 2 SKETCH B



SKETCH A TYPICAL FUELING CONNECTION



FUEL OIL FILL AND TRANSFER PIPING

REFERENCES

1. MAIN & SECONDARY DRAINAGE & BALLAST SYSTEMS	AS33 310 193714
2. DIESEL TRANS & CARGO HANDLING ARRGT.	AS14 800-6120803
3. DIAG ARRGT OF STEAM & EXHAUST SYSTEMS	AS33 800-2018867

DEPARTMENT OF THE NAVY BUREAU OF SHIPS WASHINGTON, D.C.

SHUBERT

DATE 2/1/53

APPROVED

DATE 2/1/53

SCALE - NONE

CONTRACT NO. 1A334 900 2018868

REVISIONS